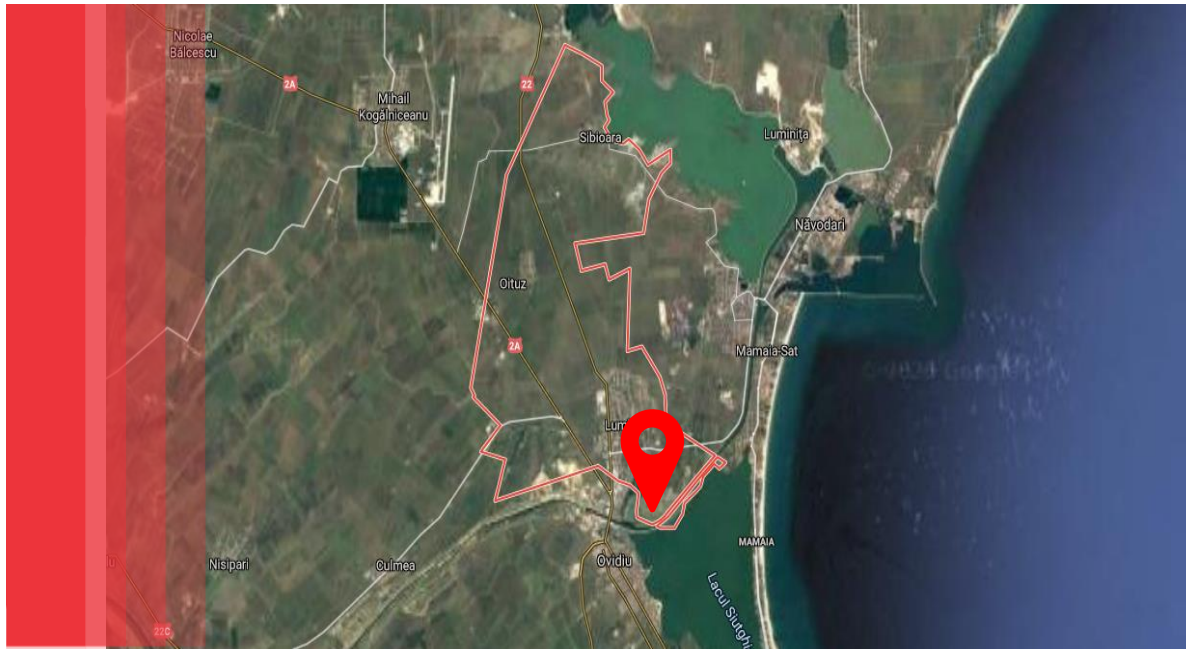


IMMO **I N V E S T**

Lumina, Constanta County

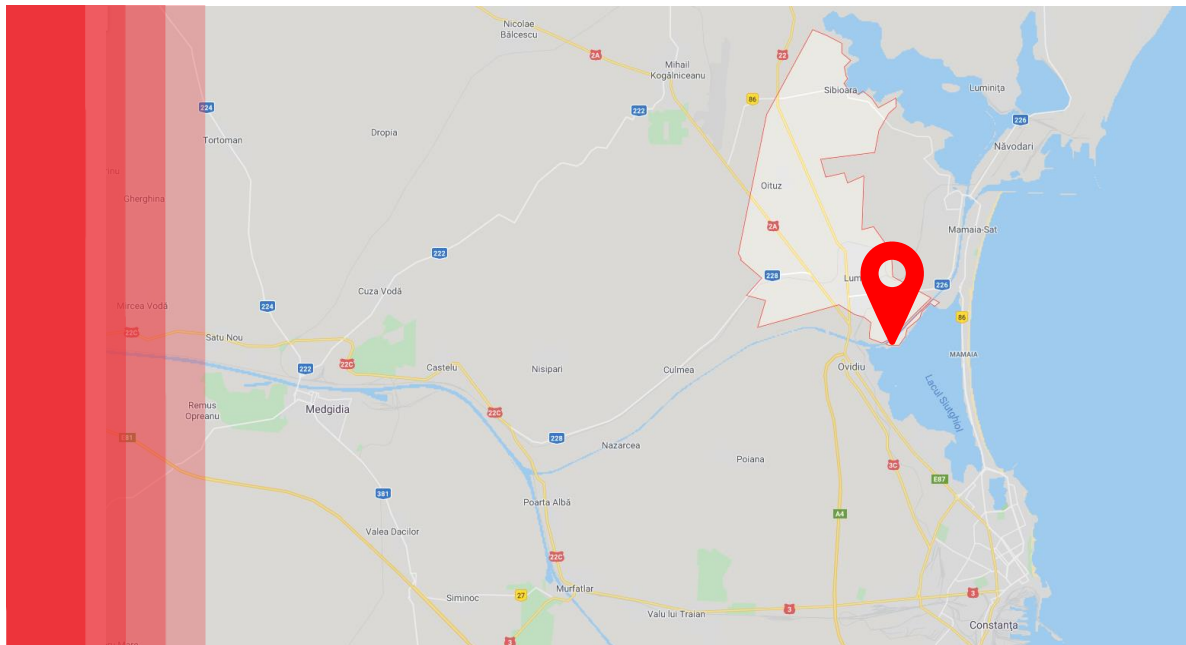
#L454CT



Property type: Land

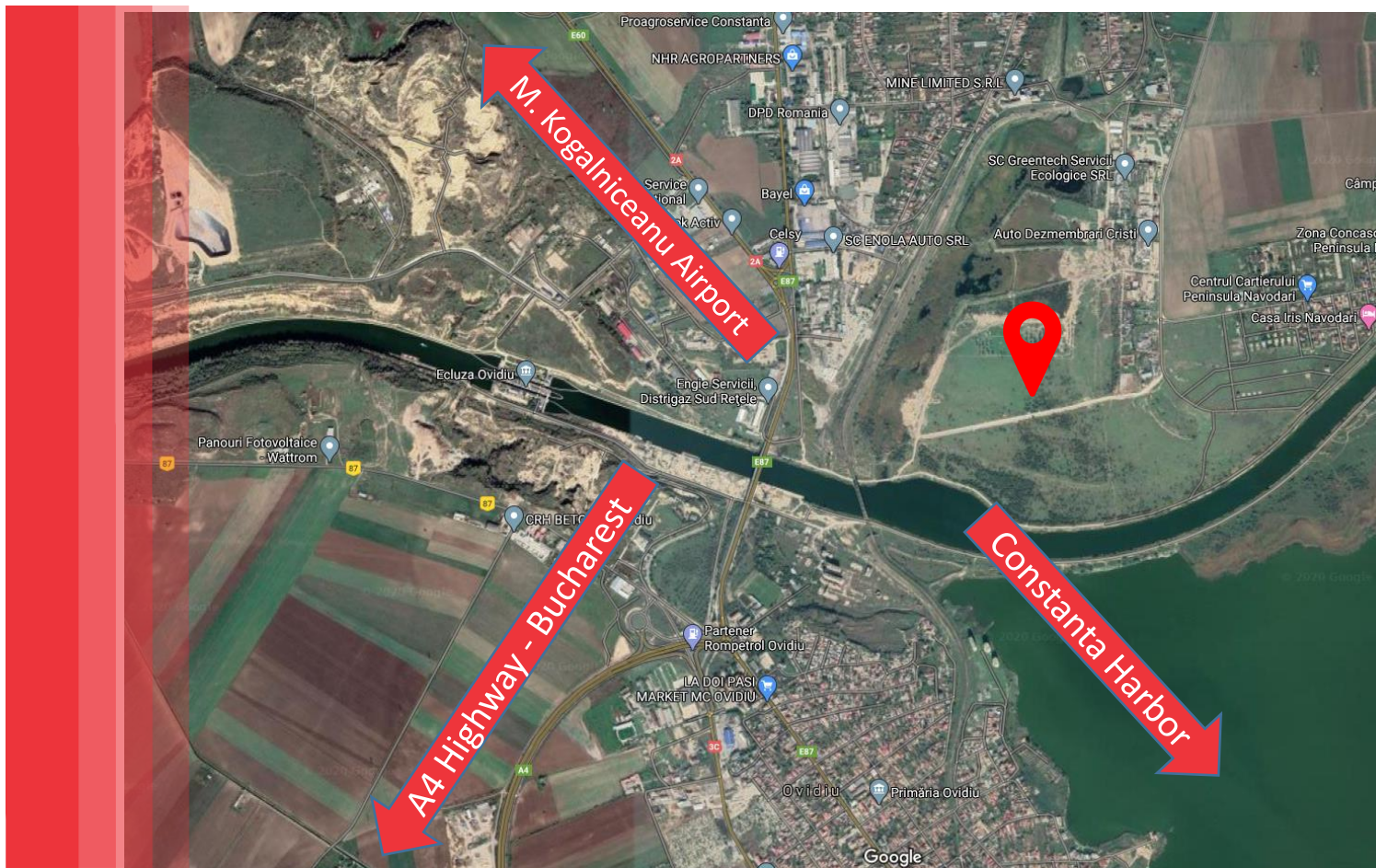
City: Lumina

Location: Centre



Surface: 180.000 sqm

Status: For sale



Location

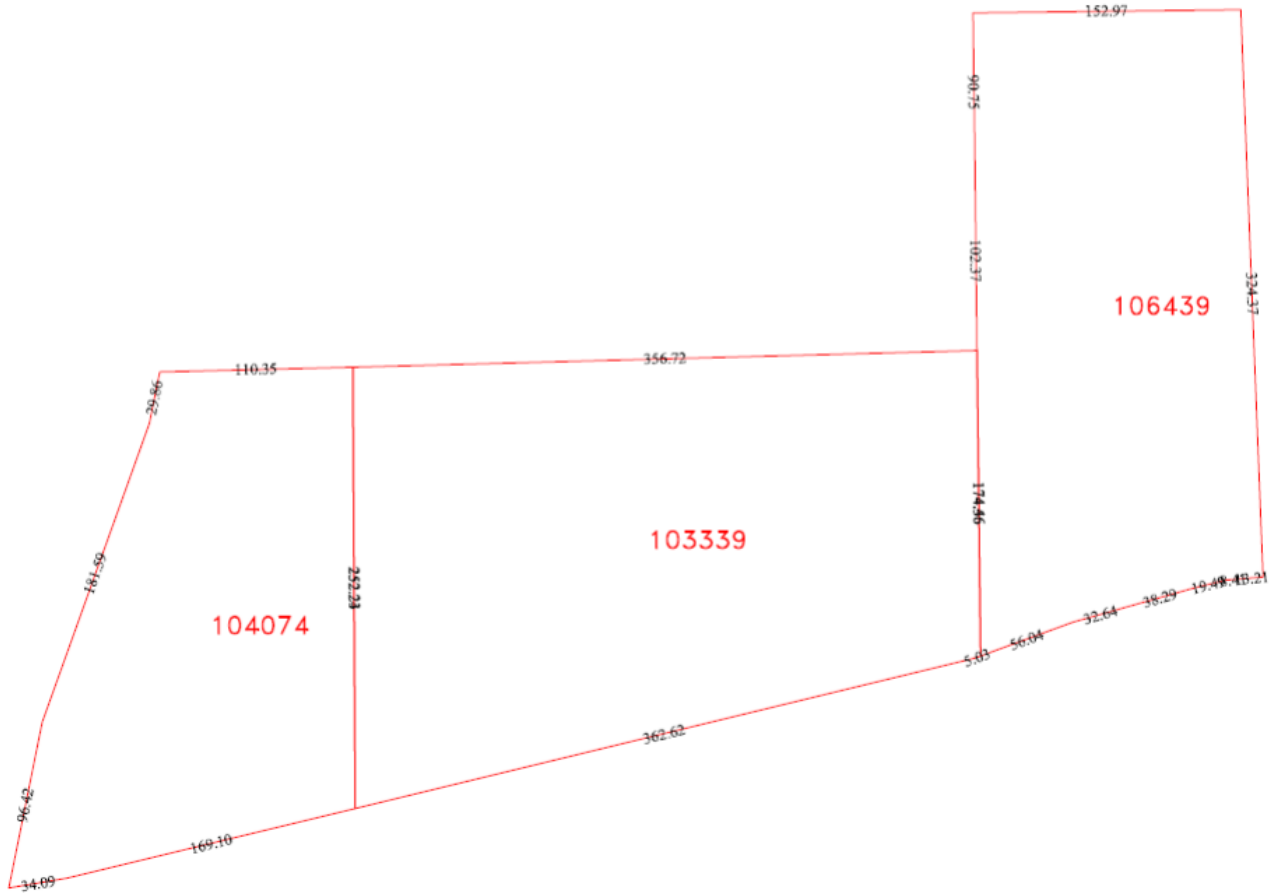
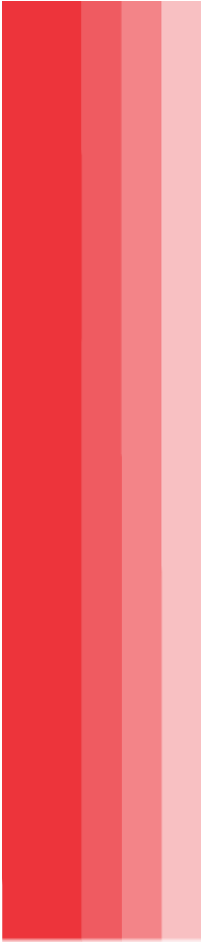
The plot is located in an excellent position between the Mihail Kogalniceanu Intl. Airport, Navodari city, Constanta City. It serves outstanding access to major transport hubs such as the Constanta Harbor and the A4 Highway to Bucharest.



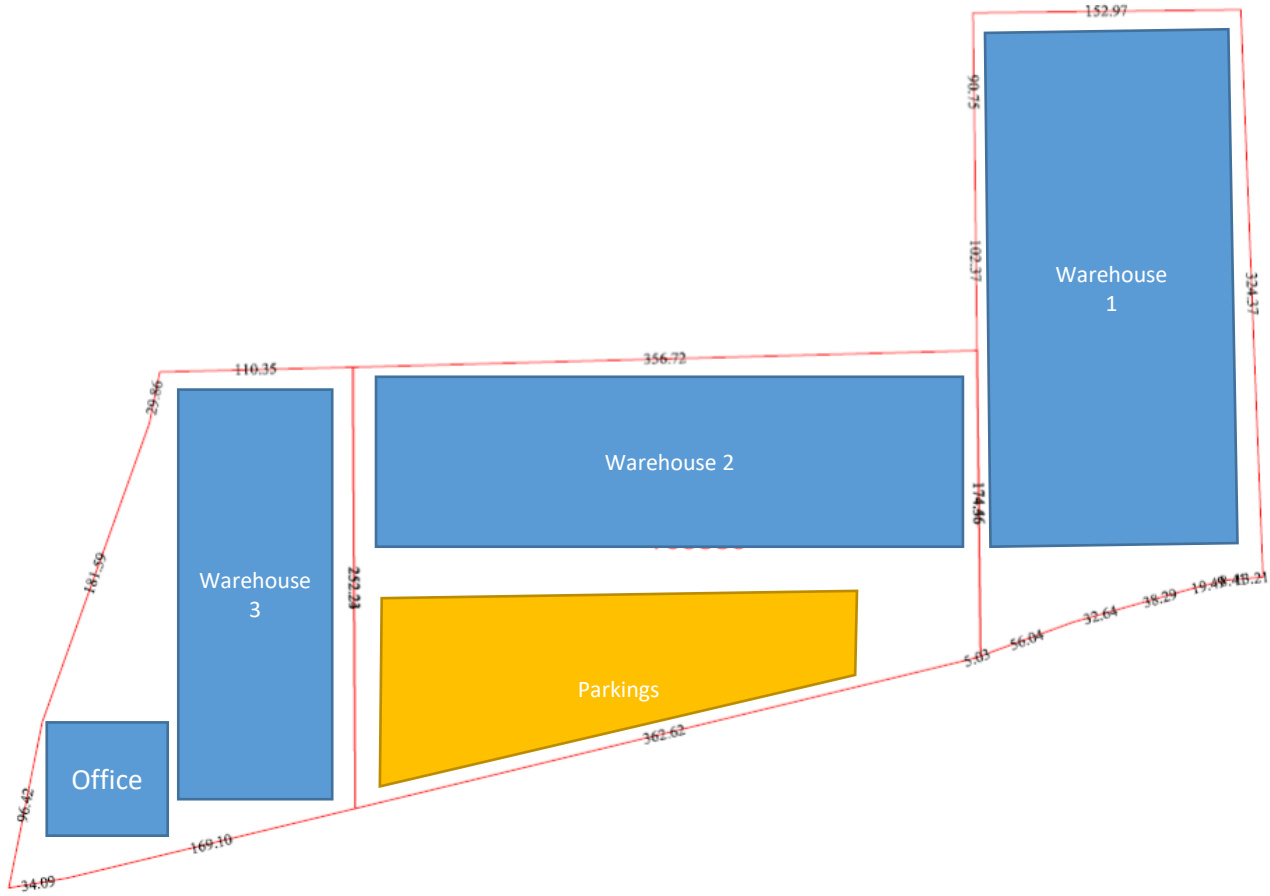
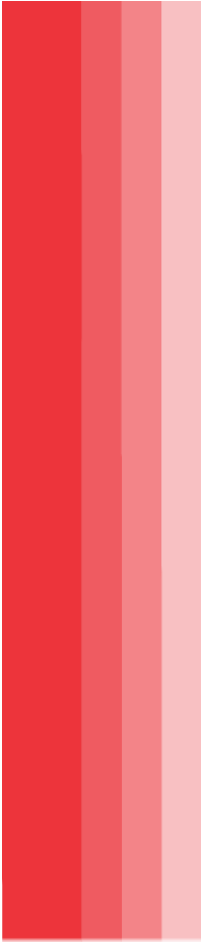
Plot Positioning

The key position is ideal for warehousing purposes. The easy access to Constanta Harbor and Bucharest via highway makes it a hot spot in this region.

The Danube Canal also passes by the property and can be a unique alternative for transportation.



Plan



Layout



Mihaela Macovei

+40 723 042 747

mihaela.macovei@immoinvest.ro

www.immoinvest.ro

